

OSTİM TECHNICAL UNIVERSITY
DEPARTMENT OF FOREIGN LANGUAGES (PREPARATORY SCHOOL)
TRANSPORTATION INFORMATION



OSTİM Technical University Department of Foreign Languages

<https://goo.gl/maps/GJSWom2uYWE72zki9>

Adress: Altay Mahallesi, Söğüt Caddesi, No: 24 06820 Eryaman / Ankara

Phone: 0.312.386 10 92

OSTİM Technical University Preparatory School Building is located in a very decent and spacious Altay Neighborhood and 50 meters away from the İstanbul Road, also known as Sincan-Bey pazarı-Ayaş Road, which is a well-traveled route. Besides, the Preparatory School Building is about 3 km away from Göksu Park and Göksu Shopping Center, 1.8 km away from Eryaman 1-2 Metro Station, which is on the same road, and 2 km away from Optimum Shopping Center. In addition to being adjacent to several private education institutions, our Preparatory School Building is within walking distance of 50 meters to places such as Starbucks, Arabica, and Gimsa.

It is possible to reach the Preparatory School located in the Eryaman Campus of OSTİM Technical University from any location in Ankara by using public transportation (Ankaray, Metro, Bus, Private-Public Transportation Vehicles, etc.). In particular, transportation can be made quickly from city centers such as Kızılay, Ulus, and AŞTİ (bus station) by using Ankaray and Metro Lines.

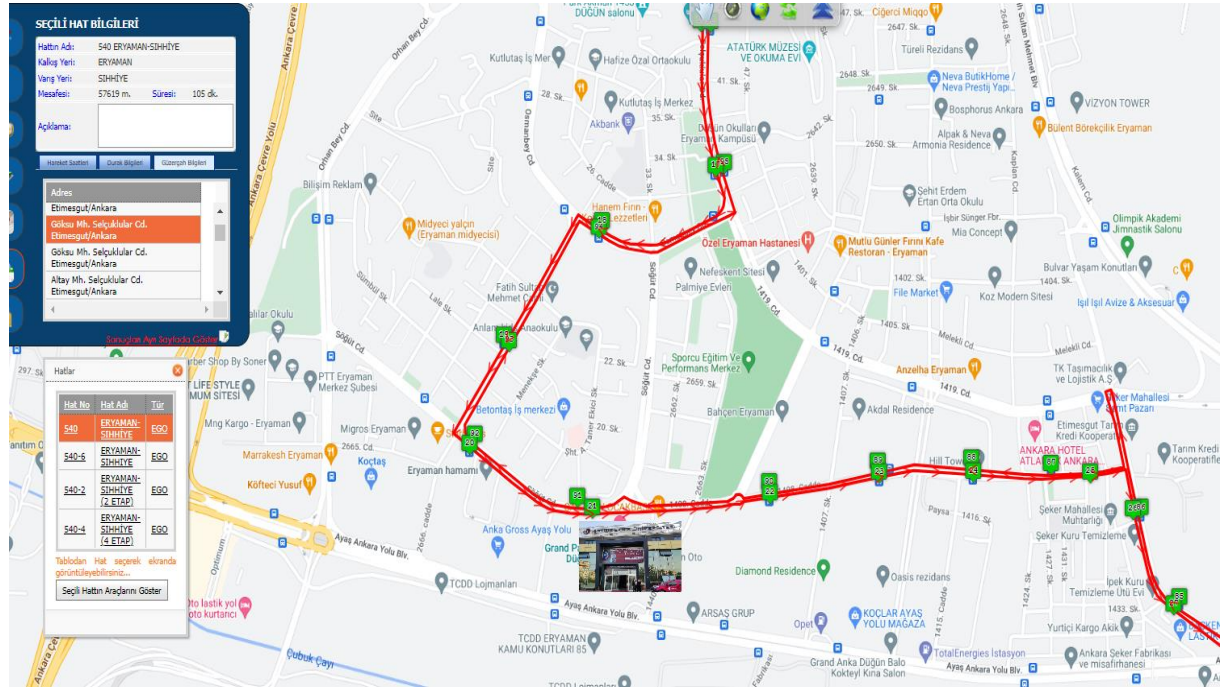
Likewise, it is possible to reach OSTİM Tech Preparatory School in a short period of time by transferring from Esenboğa Airport to Ankaray and/or Metro from AŞTİ and Ankamall (Akköprü) stations with HAVAŞ and Belkoair buses.

Ankara Public Transportation System

Online access to Ankara's public means of transportation, travel times, and distances is available through the following mobile applications:

[EGO Şehirçi Ulaşım Bilgi Sistemi](#); (EGO Urban Transportation Information System)

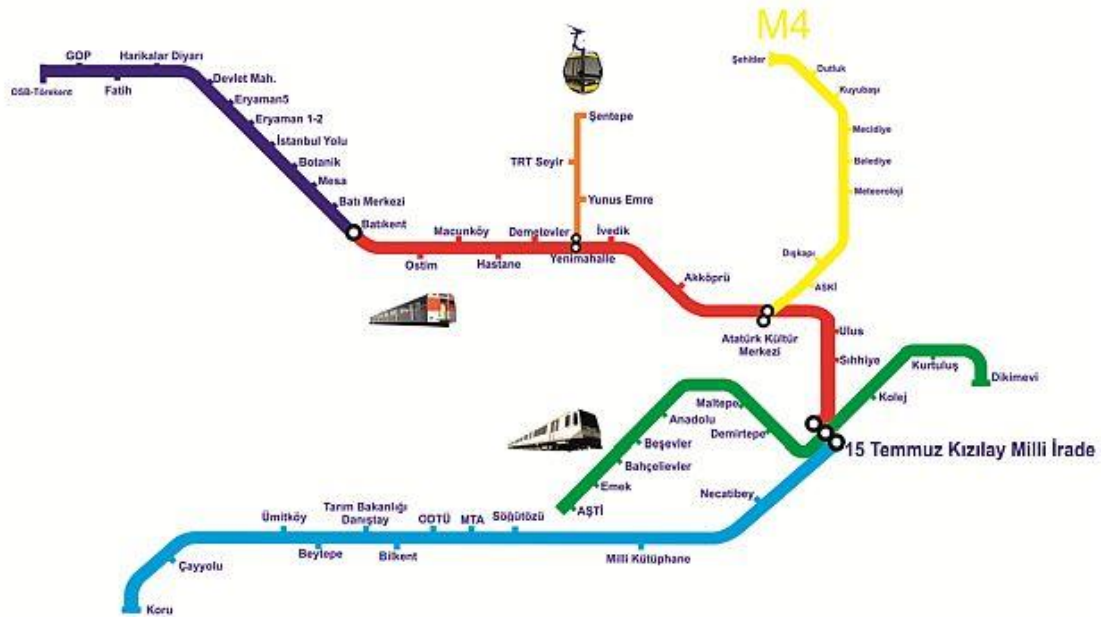
<http://map.ego.gov.tr:8080/ego/index.aspx>



Detailed information regarding the means of transportation of OSTİM Technical University Preparatory School is given below:

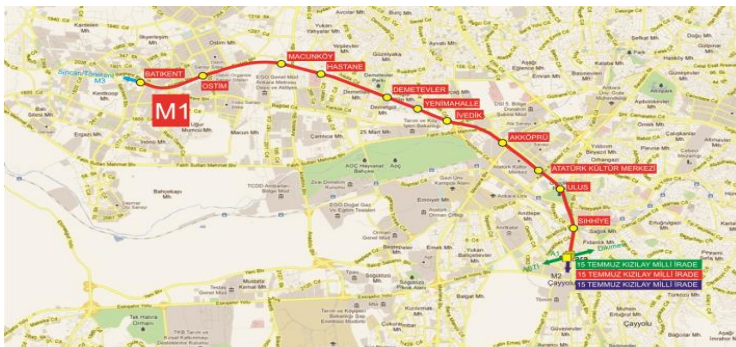
1. TRANSPORTATION VIA METRO

ANKARA RAYLI SİSTEMLER VE TELEFERİK

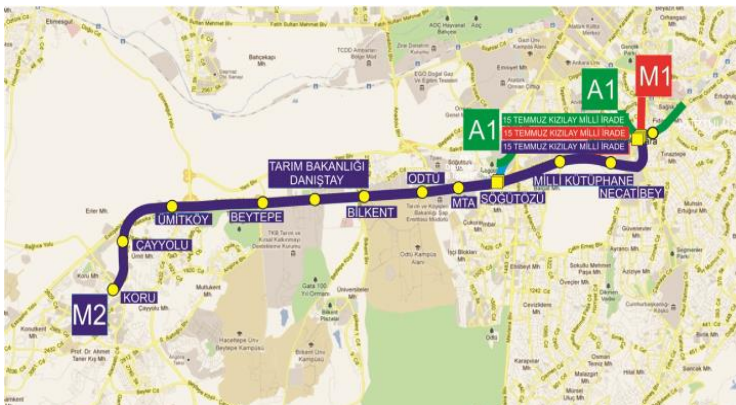


Using the Metro line, it is possible to reach OSTİM Technical University Department of Foreign Languages from all the city centers of Ankara. Eryaman 1-2 Metro Station is 1.8 km from our Preparatory School. It is possible to reach Eryaman 1-2 Metro Station from any location of the Rail Transportation Network described below:

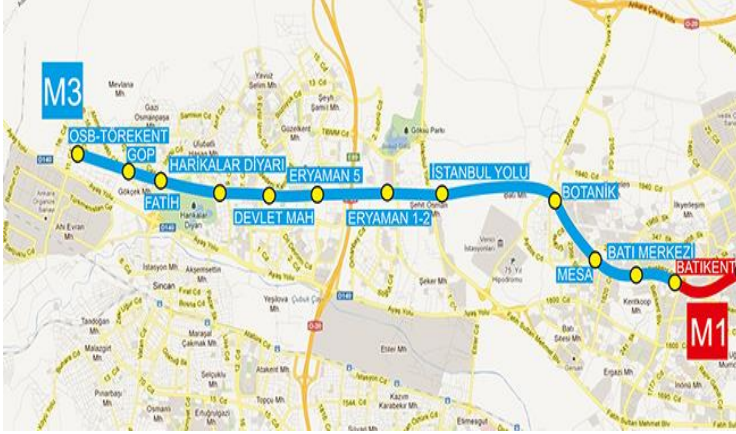
Using the metro line;



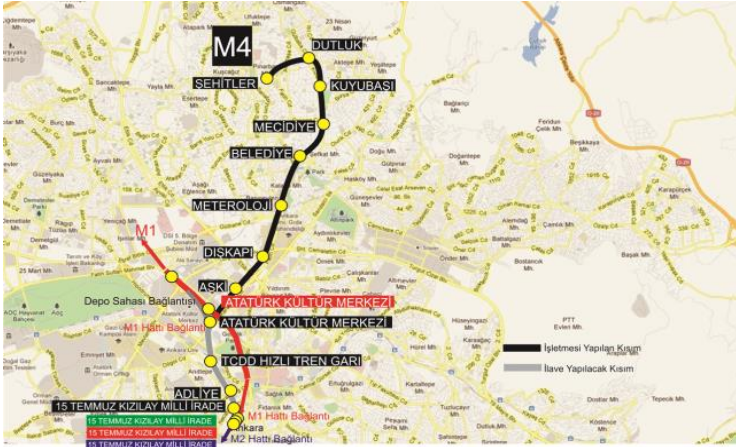
Transportation can be provided via a total of 12 different stations from KIZILAY, Sıhhiye, Ulus, Atatürk Kültür Merkezi, Akköprü (Ankamall), Yenimahalle, Demetevler, Macunköy, OSTİM, and Batıkent Centers.



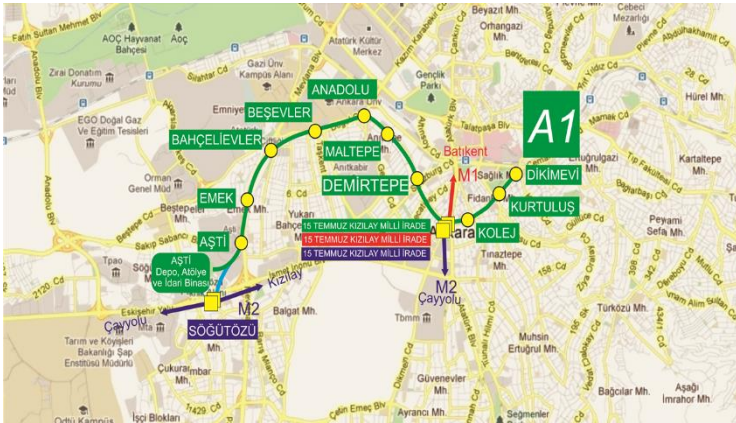
Transportation can be provided via a total of 12 different stations in the directions of Kuru, Çayyolu, Ümitköy, Beytepe, Bilkent, ODTU (METU), Söğütözü, Milli Kütüphane, and Necatibey.



At the same time, it is possible to reach Eryaman 1-2 Metro Station from 6 different metro stations in the direction of OSB Töre kent, Fatih, and Devlet Mahallesi.



Using the Keçiören Metro line, you can reach our University Preparatory School Building by transferring to Atatürk Kültür Merkezi from Şehitler, Dutluk, Kuyubaşı, Mecidiye, Belediye, Meteoroloji, Dışkapı, ASKİ stations, which are different districts of Keçiören.



By using indirect metro lines and rail systems;

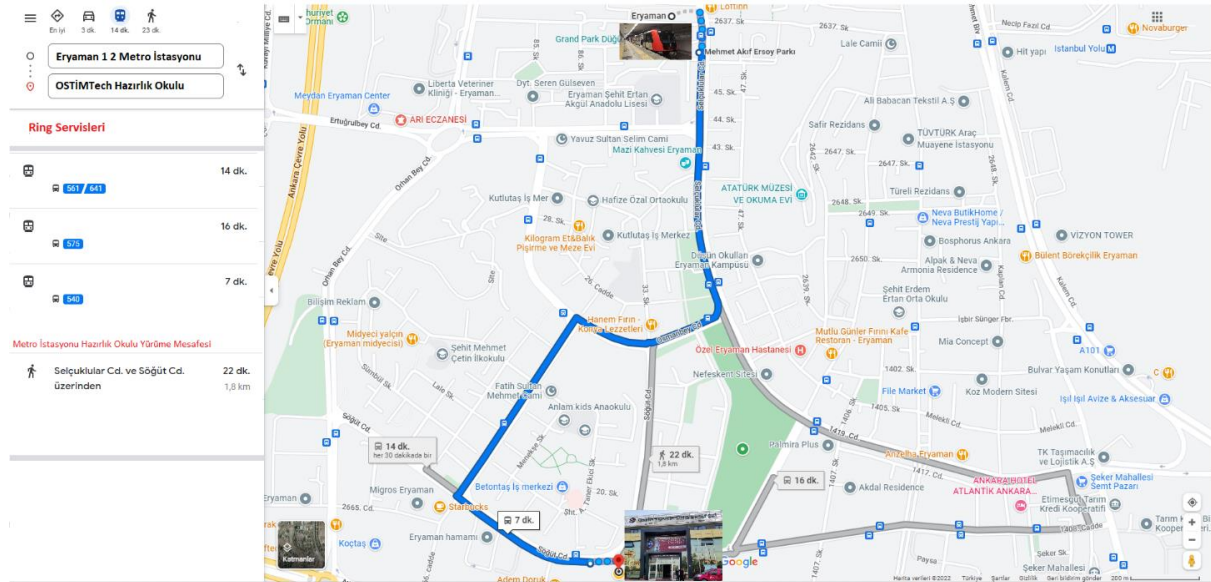
It is possible to reach AŞTİ, Emek, Bahçelievler, Beşevler, Anıtkabir, Maltepe, Demirtepe, Kolej, Kurtuluş, and Dikimevi stations by transferring to Kızılay via Ankaray Line.

Using the Cable Car and Suburban Line;

It is also possible to reach Yenimahalle Metro Station via Şentepe cable car line and to reach Sıhhiye Metro Station by Suburban Line through Sincan/Etimesgut and Mamak / Kayaş directions.

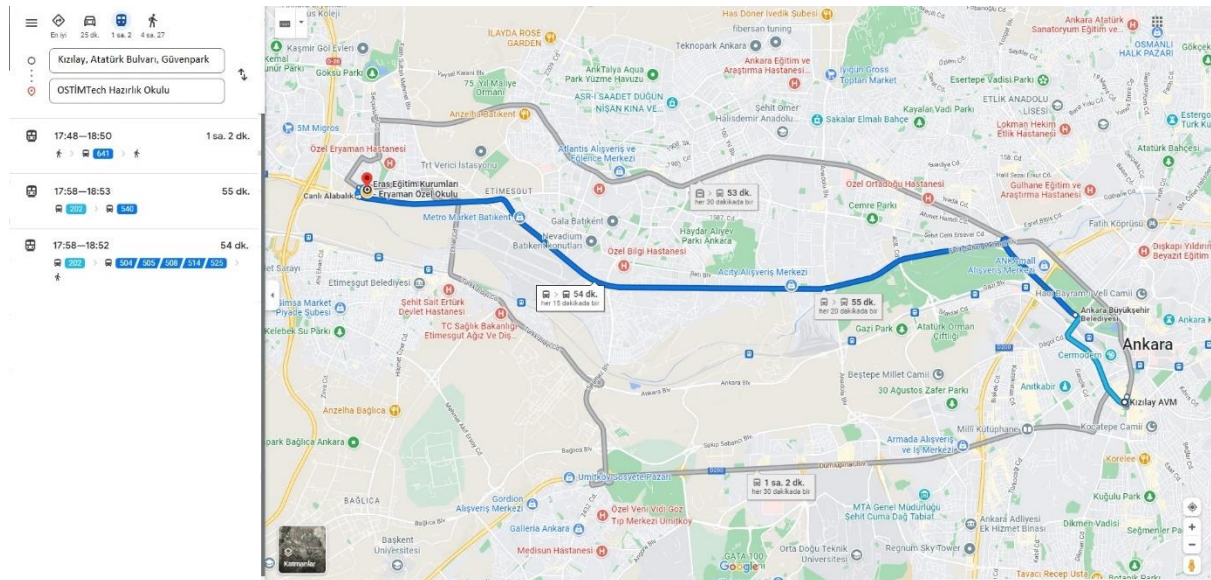
Access to Preparatory School from Eryaman 1-2 Metro Station;

After arriving at the Eryaman 1-2 Metro line by Metro, you can reach OSTİM Technical University Preparatory School by following the line shown on the map below with the Ring Services (Ring Buses numbered 540, 561, 641, and 575).



The distance between Eryaman 1-2 Metro Station and the Preparatory School is 1.8 km and takes approximately 22 minutes on foot. The park areas and greenery along the road offer a pleasant walk, especially in sunny weather.

2. TRANSPORTATION VIA BUS



Using the bus lines given below, it is possible to arrive at the bus stops where Gimsa Park Eryaman / Petrol Ofisi Gas Station / Vizyon Towers are located on İstanbul Road, which passes right behind the Preparatory School and continues in the direction of Sincan-Ayaş-Beyşehir. The distance between these stops and our school is approximately 50 meters. For transportation by bus;

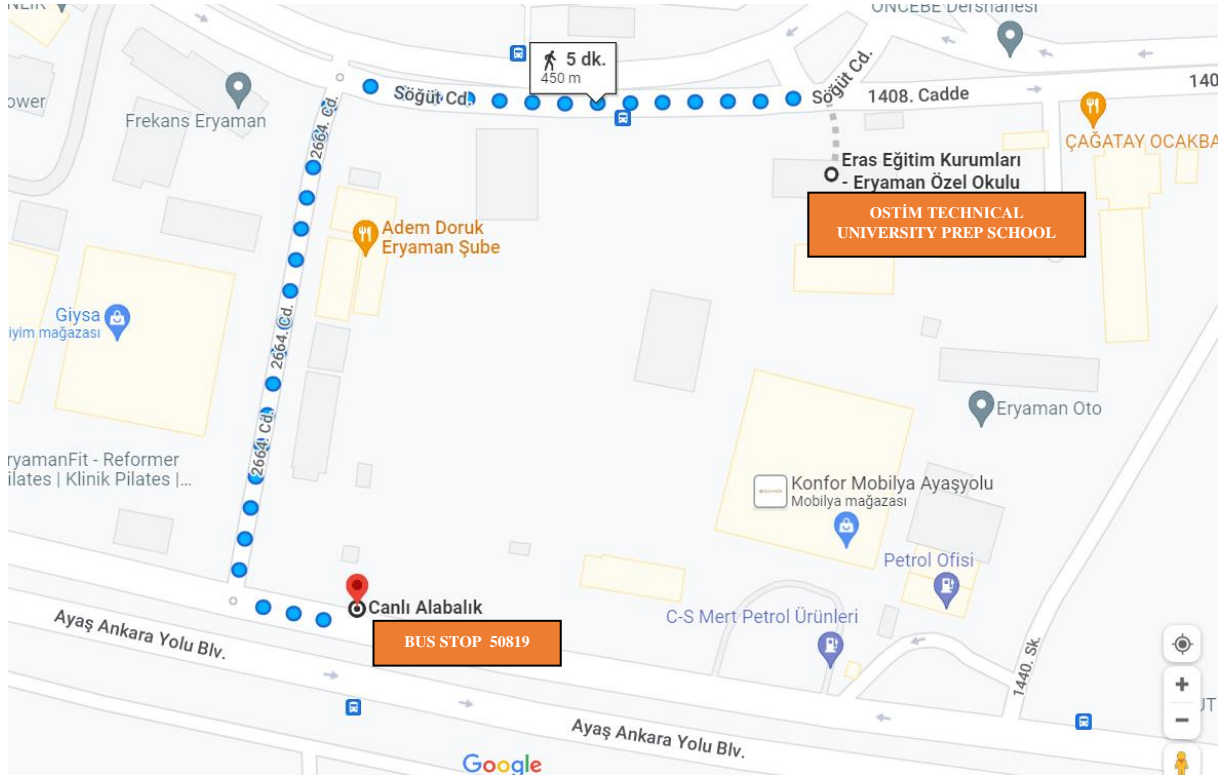
Going through Kızılay Atatürk Boulevard and from Güvenpark on the İstanbul-Ayaş Road in the direction of Eryaman, Fatih, and Sincan; Buses numbered 504, 505, 508, 514, 525, 540, and 641,

From the Sıhhiye Courthouse on the İstanbul-Ayaş road to Eryaman, Fatih, and Sincan; Buses numbered 510, 515, 520, 531, 517, and 518,

From Sincan to Ulus Sıhhiye direction, Buses numbered 505, and 510 can be used.

The way to the bus stop 50819

It takes around five minutes to walk to the bus stop 50819 from OSTİM Technical University Preparatory School. This map and the link will show you how to reach the bus stop.



<https://goo.gl/maps/2uXQHw3tDeDNe7fC9>

3. TRANSPORTATION VIA PRIVATE-PUBLIC TRANSPORTATION VEHICLE, DOLMUŞ

Over the Sıhhiye Bridge, minibuses arriving at İstanbul Road Fatih and Sincan, İstanbul Road-Eryaman direction can be used.

Besides, there are Public Transport Vehicles available from Ulus Gençlik Parkı to Yenikent, Ayaş, Güdül, and Beypazarı.

4. TRANSPORTATION BY PRIVATE VEHICLE

Transportation from Kızılay Center to OSTİM Tech Preparatory School, located at Eryaman Altay Mahallesi, Söğüt Caddesi, No: 24, can be made via two different routes, which have the shortest and smoothest route and are parallel to each other. The 23.6 km distance on Ankara Boulevard takes

approximately 24 minutes, and the 21.5 km distance on Fatih Sultan Mehmet Boulevard takes about 29 minutes.

